

MANUALLY AND MECHANICALLY ACTUATED VALVES

TYPE VCM 3/2



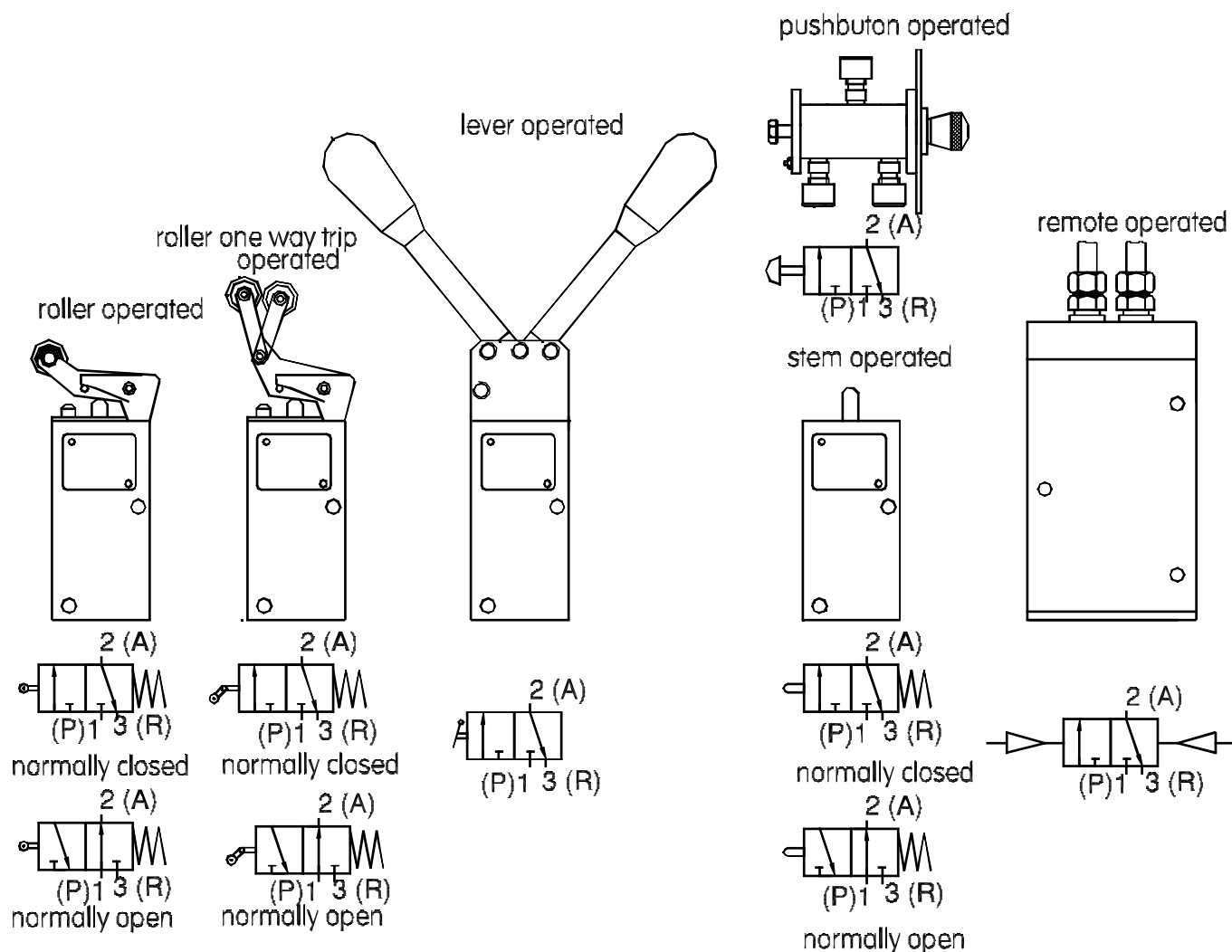
TECHNICAL CHARACTERISTICS

Nominal size (ND) : 6, 8, 12, 20
 Medium : compressed air
 Actuation type : roller operated
 roller one way trip operated
 lever operated
 stem operated
 pushbutton operated
 remote actuation
 Return type : without return
 spring return

Working pressure range : 0 to 10bar
 Ambient temperature range : -33°C to +70°C
 Flow coefficient (Kv) and weight : as in table below

Dn [mm]	6	8	12	20
Kv [m ³ /h]	0,55	0,65	2,2	6,2
weight [kg]	0.35	0.56	0.75	1.35

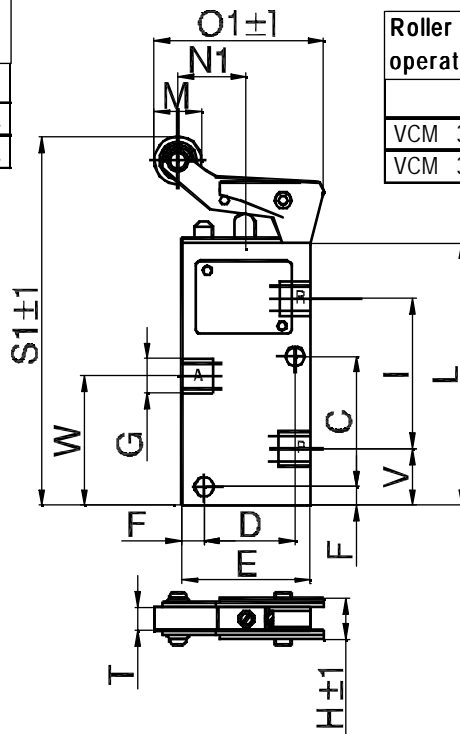
TYPICAL VERSIONS



OVERALL DIMENSIONS

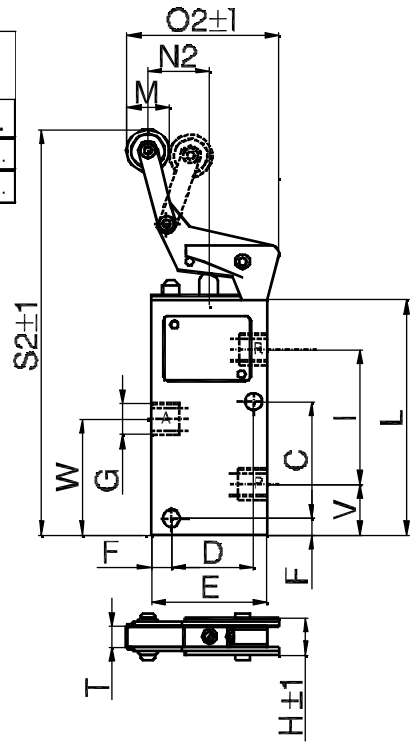
**Roller operated
(see coding)**

a.	b.	c.	d.	e.
VCM 3/2. 1. X. 01. X.				
VCM 3/2. 2. X. 01. X.				



**Roller one way trip
operated(see coding)**

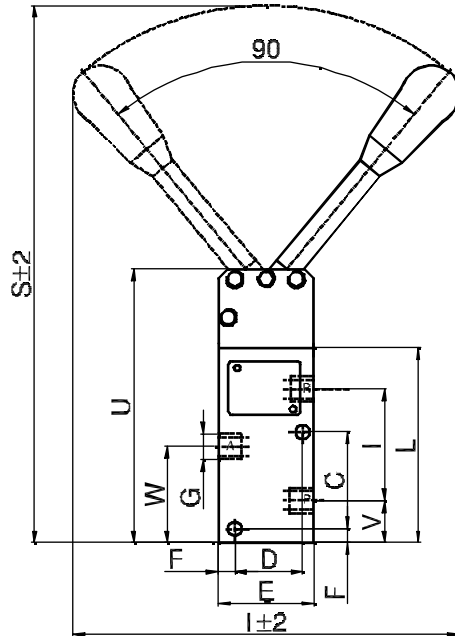
a.	b.	c.	d.	e.
VCM 3/2. 1. X. 02. X.				
VCM 3/2. 2. X. 02. X.				



CODE	G	D	E	F	C	V	I	L	φa	M	N1	N2	O1	O2	S1	S2	T	H	W
VCM 3/2. 1. X. 01. X.	G1/8"	22	30	4	19	11	22	45	4.3	φ20	20	28	48	57	85	110	6.5	20	21.5
VCM 3/2. 1. X. 02. X.																			
VCM 3/2. 2. X. 01. X.	G1/4"	30	40	5.5	25	14.5	31	60	5.3	φ20	28	35	65	68	107	134	12.5	25	29
VCM 3/2. 2. X. 02. X.																			

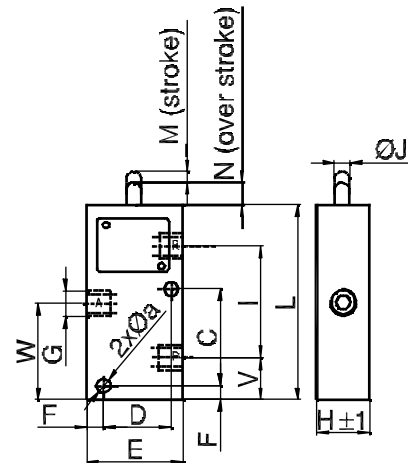
**Lever operated
(see coding)**

a.	b.	c.	d.	e.
VCM 3/2. 1. X. 03. X.				
VCM 3/2. 2. X. 03. X.				



**Stem operated
(see coding)**

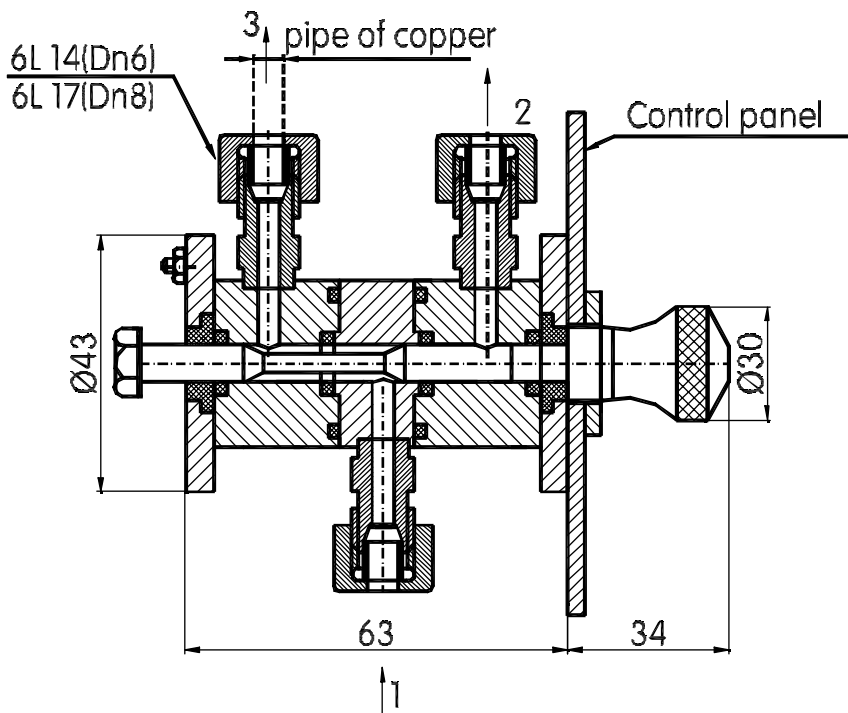
a.	b.	c.	d.	e.
VCM 3/2. 1. X. 04. X.				
VCM 3/2. 2. X. 04. X.				



CODE	G	D	E	F	C	V	I	L	φa	H	W	φJ	M	N	S	U
VCM 3/2. 1. X. 03. X.	G1/8"	22	30	4	19	8	28	45	4.3	20	22.5	-	-	-	130	85
VCM 3/2. 1. 1. 04. X.	G1/8"	22	30	4	19	8	26	45	4.3	18	22.5	7	5	5	-	-
VCM 3/2. 1. 2. 04. X.	G1/8"	22	30	4	19	11	22	45	4.3	18	21	7	5	5	-	-
VCM 3/2. 2. X. 03. X.	G1/4"	30	40	5.5	25	14.5	30	60	5.3	25	28	-	-	-	145	100
VCM 3/2. 2. X. 04. X.	G1/4"	30	40	5.5	25	14.5	31	60	5.3	25	28	7	6	5	-	-

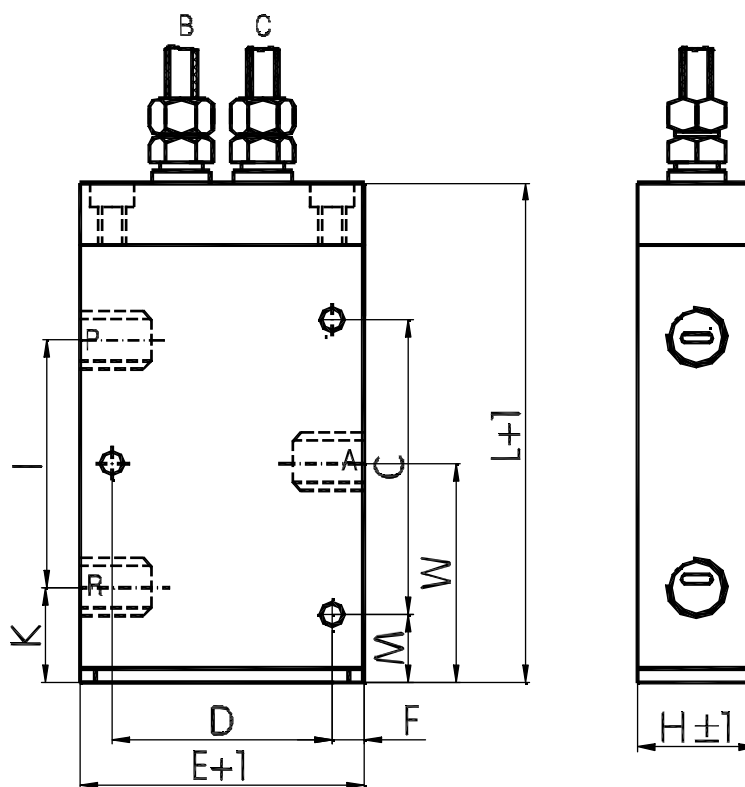
**Pushbutton operated
(see coding)**

	a.	b.	c.	d.	e.
VCM 3/2.	1.	X.	05.	X.	
VCM 3/2.	2.	X.	05.	X.	



**Pneumatic remote
actuation(see coding)**

	a.	b.	c.	d.	e.
VCM 3/2.	3.	X.	06.	X.	
VCM 3/2.	4.	X.	06.	X.	



CODE	Process connection			D	E	F	C	V	I	φa	H	L	M	N
	P	A	R											
VCM 3/2. 3. X. 06. X.	G1/2"			50	70	10	45	28	32	5.5	40	92	15	43
VCM 3/2. 4. X. 06. X.	G3/4"	G1"	G3/4"	80	119	19.5	55	25	48	9.5	56	123	20	51

CODING (HOW TO ORDER)

VCM	X/X	X.	X.	XX.	X.	
Coding Level	a	b	c	d	e	Coding level denomination
	3/2					a) Number of ways / positions
						3 ways / 2 positions
						b) Nominal size
		1				6 mm
		2				8 mm
		3				12 mm
		4				20 mm
						c) Valve state
			1			normally close
			2			normally open
						d) Actuation type
				01		roller operated
				02		roller one way trip operated
				03		lever operated
				04		stem operated
				05		pushbuton operated
				06		remote actuation - only for 3 or 4 at level b
						e) Climatic region
					1	normal
					2	T2 STAS 6692-83

NOTE: Versions available as indrawings with Overall dimensions .

EXAMPLE OF ORDERING

VCM 3/2. 1. 1. 01. 1.						
	VCM 3/2.		1	1	01.	1.
Nominal size	6 mm					
Valve state]	normally closed					
Actuation type	roller operated					
Climatic region	normal					

MANUALLY AND MECHANICALLY ACTUATED VALVES

TYPE VCM 5/2



TECHNICAL CHARACTERISTICS

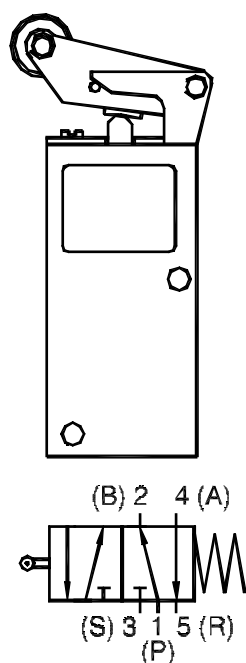
Nominal size (ND) : 6; 8 mm
 Medium : compressed air
 Actuation type : roller operated
 lever operated
 Return type : spring return

Working pressure range : 0 to 10 bar
 Ambient temperature range : -40°C to +70°C
 Flow coefficient (Kv) and weight , as in table below :

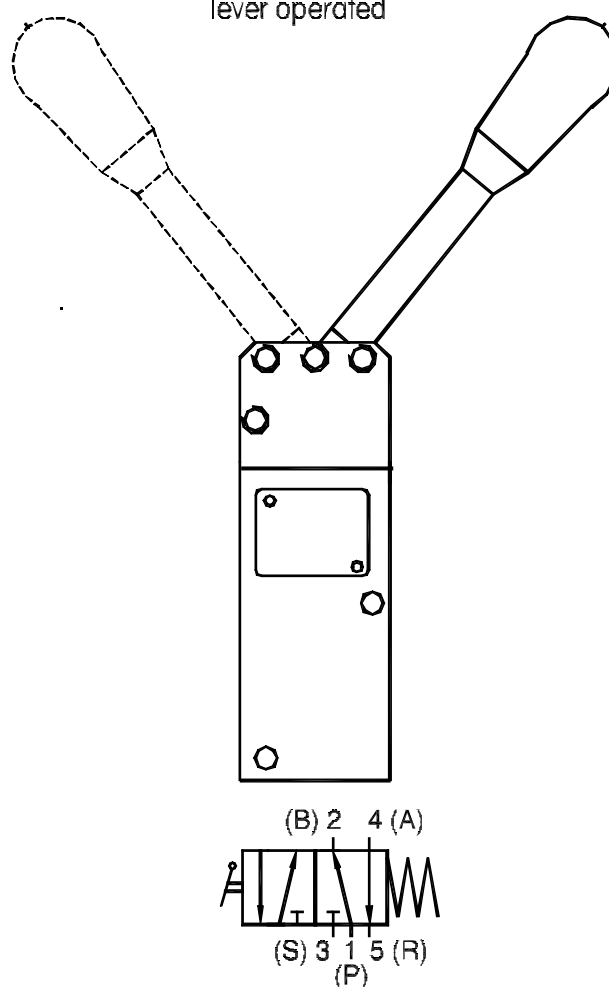
ND [mm]	6	8
Kv [m ³ /h]	0,55	0,7
Weight [kg]	0,75	0,95

TYPICAL VERSIONS

roller operated



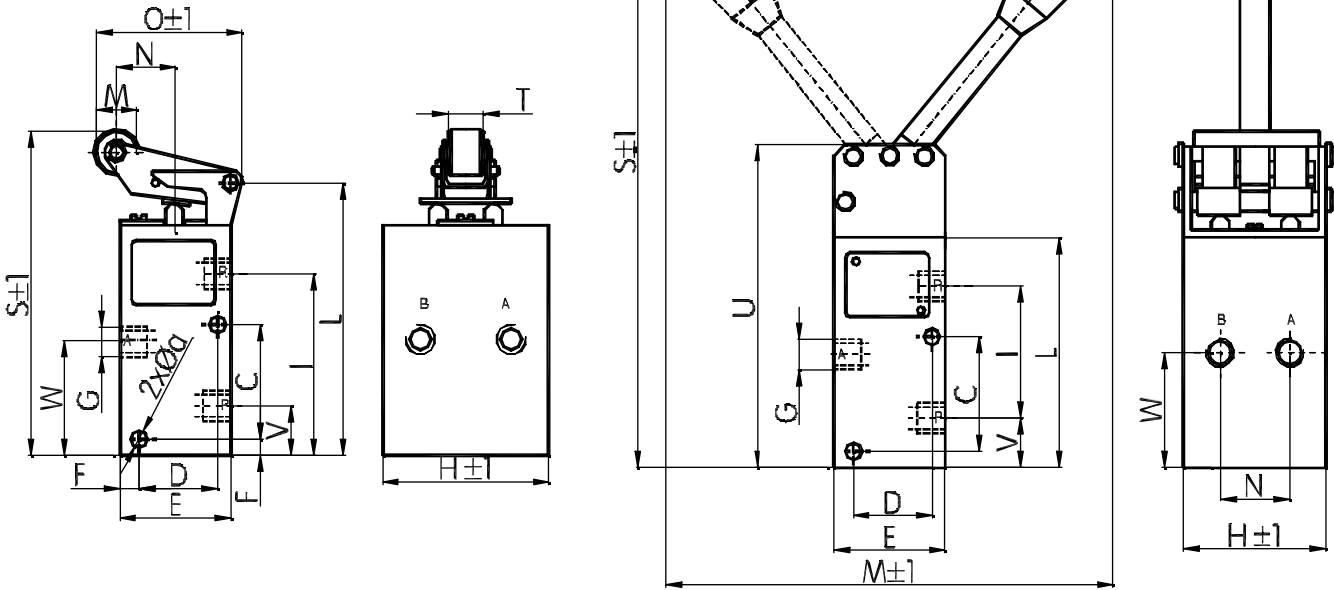
lever operated



OVERALL AND MOUNTING DIMENSIONS

Lever operated (see coding)			
a.	b.	c.	d.
VCM 5/2.	1.	02.	01.
VCM 5/2.	2.	02.	01.

Roller operated (see coding)			
a.	b.	c.	d.
VCM 5/2.	1.	01.	01.
VCM 5/2.	2.	01.	01.



CODE	G	D	E	F	C	V	I	H	L	M	N	O	T	S	U	W	φa
VCM 5/2. 1. 01. 01	G1/8"	22	30	4	19	10	35	40	56	φ20	22	52	10	80	-	22	4.3
VCM 5/2. 2. 01. 01	G1/4"	30	40	5	25	15	45	60	75	20	22	52	10	98	-	28	5.3
VCM 5/2. 1. 02. 01	G1/8"	22	30	4	19	11	22	45	45	170	20	195	4	-	85	22.5	-
VCM 5/2. 2. 02. 01	G1/4"	30	41	5.5	25	14.5	30	60	60	170	30	210	5	-	100	28	-

CODING (HOW TO ORDER)

VCM	5/2.	X.	XX.	X	Coding Level Denomination
Coding Level	a	b	c	d	
	5/2				a) Number of ways / positions 5 way s/ 2 positions
		1			b) Nominal size 6 mm
		2			8 mm
			01		c) Actuation type roller operated
			02		lever operated
				01	d) Process conection female threaded connection

NOTE: Versions available as in drawings with Overall imensions.